









FRAME & SUPPORT STRUCTURES

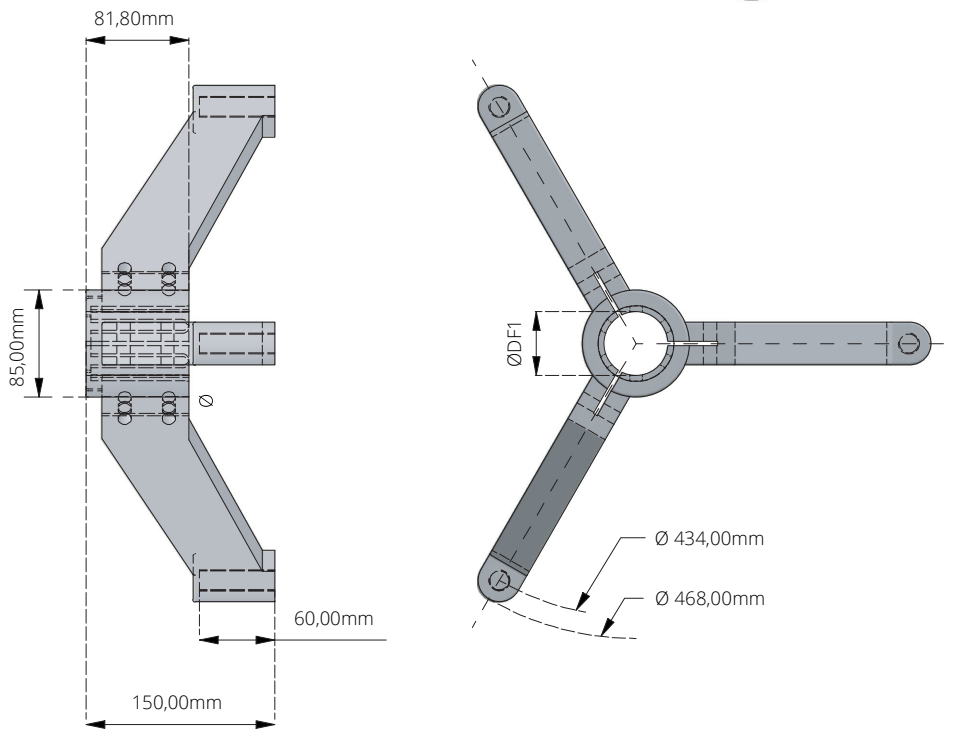
TRIPOD SUPPORT BASE	BIPOD SUPPORT BASE	SUPPORT HEAD	SIDE MOUNT BRACKET
			
PAGE: L2	PAGE: L3	PAGE: L4	PAGE: L4

60mm DIA BASE - ARTICULATED FOOT	80mm DIA BASE - ARTICULATED FOOT	100mm DIA BASE - ARTICULATED FOOT	SQUARE TUB INSERTS
			
PAGE: L5	PAGE: L5	PAGE: L5	PAGE: L6

LOCKING COLLARS

PAGE: L7

L0001 TRIPOD SUPPORT BASE



TRIPODS				
TUBE Ø - DF1				
MATERIAL	FASTENERS	48,3	50,9	60,3
		CODE THEN DESCRIPTION		
PA-FG BLACK	SS AISI 304	L00001-00001 TRIPOD 48.3 MM I/D	L00001-00002 TRIPOD 50.9 MM I/D	L00001-00003 TRIPOD 60.3 MM I/D

SS AISI 304: STAINLESS STEEL



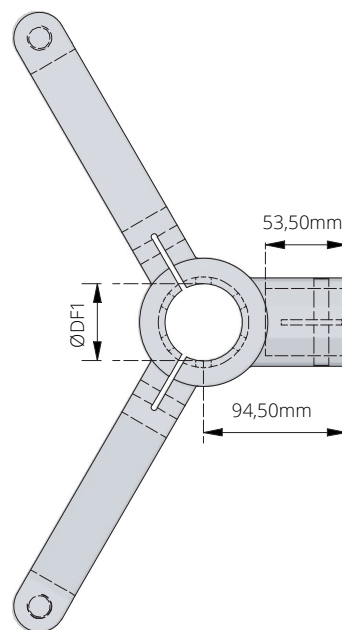
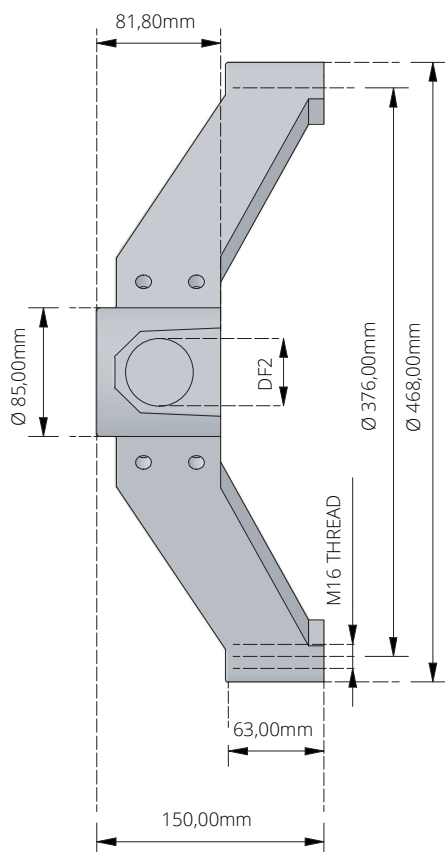
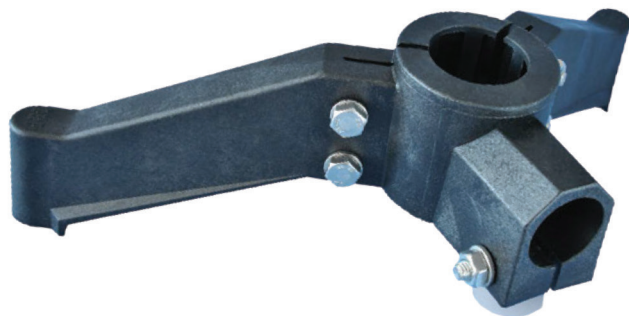
MATERIALS

TABLE OF
CONTENTS

BACK TO FRAME &
STRUCTURE SUPPORT INDEX

WWW.IRP.CO.ZA

L00002 BIPOD SUPPORT BASE



BIPODS 180° WITH JOINT

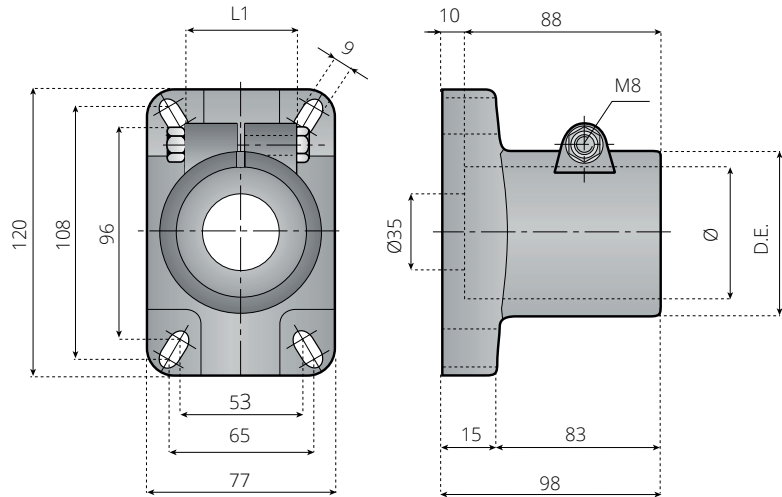
TUBE Ø - DF1

MATERIAL	TUBE Ø - DF2	FASTENERS	48,3	50,9	60,3
			CODE THEN DESCRIPTION		
PA-FG BLACK	42,4 (1 ¼")	SS AISI 304	L00002-00001 BIPOD 48.3mm I/D - TUBE I/D 42.4mm	L00002-00002 BIPOD 50.9mm I/D - TUBE I/D 42.4mm	L00002-00003 BIPOD 60.3mm I/D - TUBE I/D 42.4mm
	48,3 (1 ½")		L00002-00004 BIPOD 48.3mm I/D - TUBE I/D 48.3mm	L00002-00005 BIPOD 50.9mm I/D - TUBE I/D 48.3mm	L00002-00006 BIPOD 60.3mm I/D - TUBE I/D 48.3mm

SS AISI 304: STAINLESS STEEL



L00003 SUPPORT HEAD

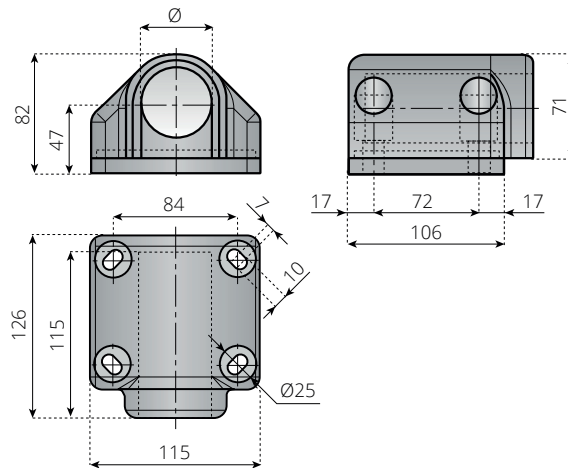


MATERIAL	D.E.	L1	TUBE Ø		
			48,3	50,9	60,3
CODE THEN DESCRIPTION					
PA-FG BLACK	77	50	L00003-00001 SUPPORT HEAD 48,3mm	L00003-00002 SUPPORT HEAD 50,9mm	L00003-00003 SUPPORT HEAD 60,3mm

MATERIAL: REINFORCED POLYAMIDE, SCREW, NUT AND WASHERS IN STAINLESS STEEL AISI 304.

NOTE: MAX. RECOMMENDED TIGHTENING TORQUE 2 KGM.

L00004 SIDE MOUNTING BRACKET



MATERIAL	TUBE Ø	
	48,3	50,9
CODE THEN DESCRIPTION		
PA-FG BLACK	L00004-00001 SIDE MOUNTING BRACKET 48,3mm	L00004-00002 SIDE MOUNTING BRACKET 50,9mm



MATERIALS

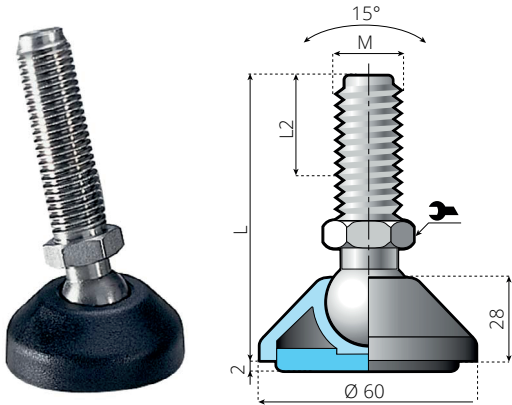


TABLE OF
CONTENTS



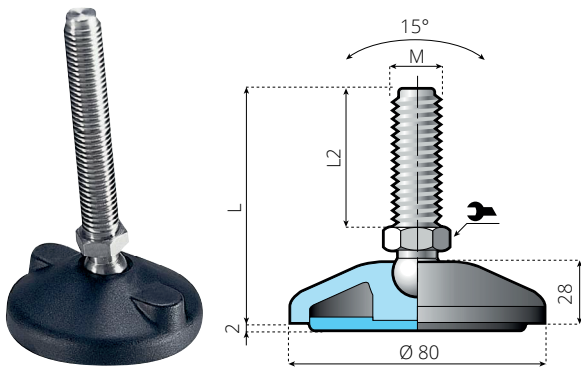
BACK TO FRAME &
STRUCTURE SUPPORT INDEX

L00005 ARTICULATED FEET/LEVELERS



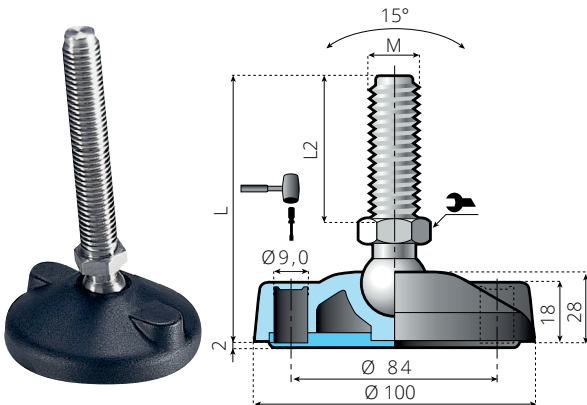
M	L mm	L2 mm	ANTI-SLIP WITH RUBBER
			CODE THEN DESCRIPTION ASSEMBLED
M12	104	66	L00005-00001 M12 - ANTI VIBR. FOOT COMP. 60 DIA.
M16			L00005-00002 M16 - ANTI VIBR. FOOT COMP. 60 DIA.

BASE: REINFORCED POLYAMIDE.
SPINDLE: STAINLESS STEEL 304.



M	L mm	L2 mm	ANTI-SLIP WITH RUBBER
			CODE THEN DESCRIPTION ASSEMBLED
M12	104	66	L00005-00003 M12 - ANTI VIBR. FOOT COMP. 80 DIA.
M16			L00005-00004 M16 - ANTI VIBR. FOOT COMP. 80 DIA.

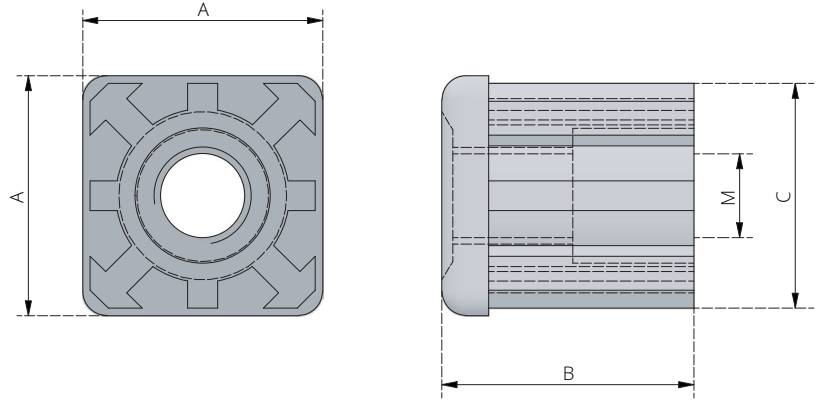
BASE: REINFORCED POLYAMIDE.
SPINDLE: STAINLESS STEEL 304.



M	L mm	L2 mm	ANTI-SLIP WITH RUBBER
			CODE THEN DESCRIPTION ASSEMBLED
M12	104	66	L00005-00005 M12 - ANTI VIBR. FOOT COMP. 100 DIA.
M16			L00005-00006 M16 - ANTI VIBR. FOOT COMP. 100 DIA.

BASE: REINFORCED POLYAMIDE.
SPINDLE: STAINLESS STEEL 304.

L0006 TUBE INSERTS



COMPONENTS AND MATERIAL

TECHNICAL INFORMATION

- **EXTERNAL PART IN REINFORCED POLYAMIDE.**
- **CONICAL INSERT IS IN NICKEL PLATED BRASS.**
- **NOTES: BOLT AND WASHER ARE NOT INCLUDED.**

- **MAX. LOAD FOR REMOVAL KGF 420 (STATIC CONDITIONS).**

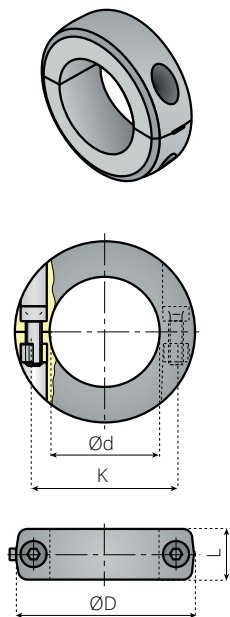
M	DIMENSIONS mm				CODE THEN DESCRIPTION
	A	B	C	WALL	
12	38	42	34,5	2,0	L00006-00001 SQ TUBE INSERT M12 - 38x38x2.0
16	40	42	37,5	1,5	L00006-00002 SQ TUBE INSERT M16 - 40x40x1.5
	40	42	36,5	2,0	L00006-00003 SQ TUBE INSERT M16 - 40x40x2.0
	50	44	47,5	1,5	L00006-00004 SQ TUBE INSERT M16 - 50x50x1.5
	50	44	45,5	2,5	L00006-00005 SQ TUBE INSERT M16 - 50x50x2.5



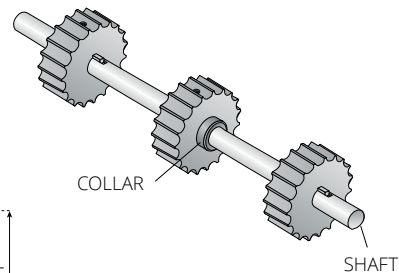
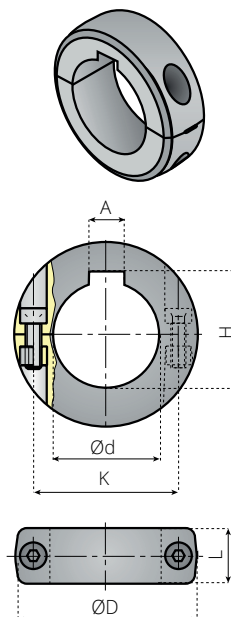
L00007 LOCKING COLLARS



VERSION ROUND BORE



VERSION WITH KEYWAY



d	D	L	K	VERSION ROUND BORE	A (P9)	H (+0,2/+0)	VERSION WITH KEYWAY
				CODE THEN DESCRIPTION			CODE THEN DESCRIPTION
20	40	14	29	L00007-00001 SPLIT LOCKING COLLARS 20B	6	23,2	L00007-00002 SPLIT LOCKING COLLARS 20BK
25	45	14	34	L00007-00003 SPLIT LOCKING COLLARS 25B	8	28,2	L00007-00004 SPLIT LOCKING COLLARS 25BK
30	55	16	39	L00007-00005 SPLIT LOCKING COLLARS 30B	8	33,2	L00007-00006 SPLIT LOCKING COLLARS 30BK
35	60	16	45	L00007-00007 SPLIT LOCKING COLLARS 35B	10	38,2	L00007-00006 SPLIT LOCKING COLLARS 35BK
40	65	18	51,5	L00007-00007 SPLIT LOCKING COLLARS 40B	12	43,2	L00007-00006 SPLIT LOCKING COLLARS 40BK