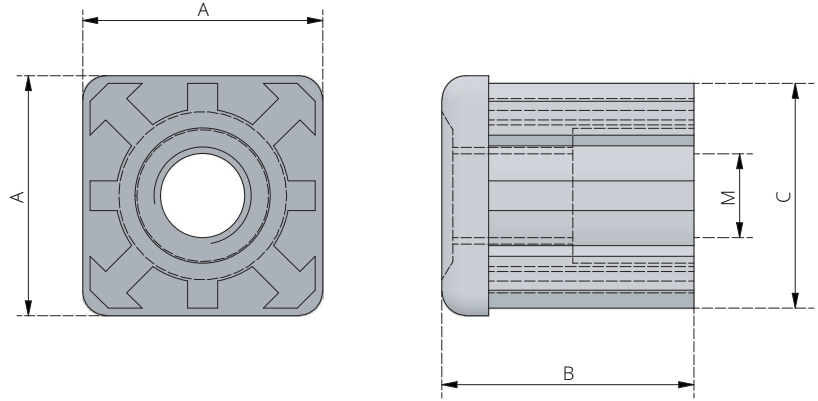
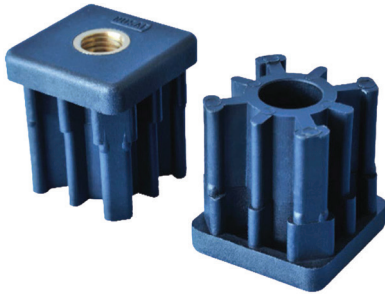


# L00006 TUBE INSERTS



## COMPONENTS AND MATERIAL

- **EXTERNAL PART IN REINFORCED POLYAMIDE.**
- **CONICAL INSERT IS IN NICKEL PLATED BRASS.**
- **NOTES: BOLT AND WASHER ARE NOT INCLUDED.**

## TECHNICAL INFORMATION

- **MAX. LOAD FOR REMOVAL KGF 420 (STATIC CONDITIONS).**

M	DIMENSIONS mm				CODE THEN DESCRIPTION
	A	B	C	WALL	
12	38	42	34,5	2,0	L00006-00001 SQ TUBE INSERT M12 - 38x38x2.0
16	40	42	37,5	1,5	L00006-00002 SQ TUBE INSERT M16 - 40x40x1.5
	40	42	36,5	2,0	L00006-00003 SQ TUBE INSERT M16 - 40x40x2.0
	50	44	47,5	1,5	L00006-00004 SQ TUBE INSERT M16 - 50x50x1.5
	50	44	45,5	2,5	L00006-00005 SQ TUBE INSERT M16 - 50x50x2.5

